



INSTALLATION MANUAL



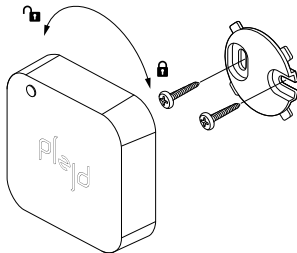
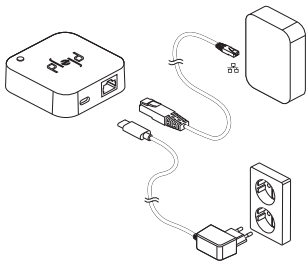
**GATEWAY
GWY-01**

More information can be found
in the Plejd app or at [plejd.com](https://www.plejd.com)

1 Installation and connection

The Gateway is powered through the power adapter and connects to the local network via Ethernet, and communicates wirelessly with your Plejd products. Place the Gateway within clear range of your Plejd system,

and not in a closed metal cabinet. The Gateway can also be mounted in place with the accompanying wall bracket. A network cable and a power adapter are supplied in the box. Screws for the wall bracket are not included.



2 Download the app

Download the Plejd app on the App Store or Google Play. Open the app and follow the instructions to add the Gateway to your Plejd system.

Setup requires an Internet connection on your phone. Your mobile phone or tablet with the app can communicate directly to the unit over Bluetooth®*.

* Requires phone or tablet with Bluetooth® 4.0 or later, and possibly the latest version of Android or iOS.

Technical data

MODEL NAME

GWY-01

POWER ADAPTER (SUPPLIED)

100-230 V ~50/60 Hz 0,2 A

Output voltage: +5V DC 1 A
USB-C

DIMENSIONS

70 × 70 × 20 mm

RADIO

2,4 GHz mesh*

Bluetooth®

* Plejd's mesh technology extends the range by having the units communicate with each other.

POWER CONSUMPTION

0,6 W

OPERATING TEMPERATURE

0 to +35°C

RADIO RANGE

Approx. 10 m indoors*

* depending on the installation environment and disturbance factors

MANUFACTURER

Plejd AB

COUNTRY OF MANUFACTURE

Sweden

Support

If you have any technical questions, please contact Plejd's customer service:

Email: support@plejd.com | Tel.: +46 (0)10-207 89 01

Standards met

Plejd AB hereby declares that the product complies with the norms and guidelines pursuant to Directive 2014/53/EU.

EN 60950-1
EN 301489-17
EN 300328

www.plejd.com

